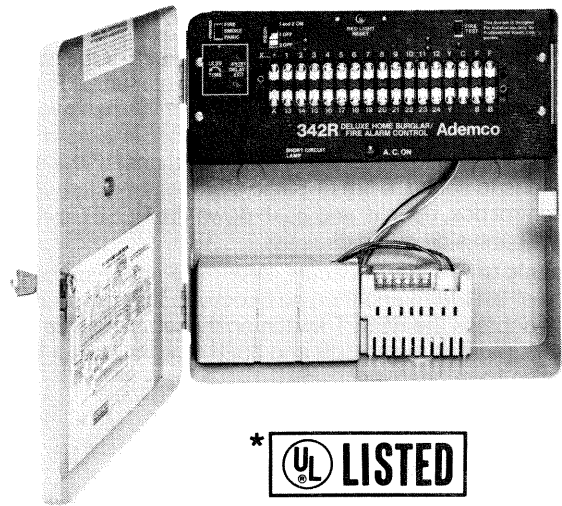


Your Ademco Combination Fire-Burglary Alarm System

(Models 330R, 332R, 342R*)



INTRODUCTION

Your master control panel is designed to alert you in the event of either a forced entry into a protected area or signal an alarm if a fire alarm condition exists. We have accomplished this by engineering our panel to include a burglar alarm circuit, a panic or emergency circuit, and a fire alarm circuit.

The burglar alarm section of the master control provides for two zones of operation. This enables the installation to be separated into two areas of protection. This can be used for either interior and perimeter protection or simply to "zone" the system should you desire to eliminate part of your protection for some reason. Also, if equipped, your master control may have a third "delay" zone which enables you to exit without having to re-arm the system by using an outdoor remote control.

When all of your protective devices are "closed" (doors, windows, etc.), a system "ready" lamp will light on your remote station (GREEN for two-lamp arming stations, or flashing RED for one-lamp arming stations). If one of these devices is "open", the ready light will not be on and, therefore, you will not be able to arm your system. Once armed, should any of these protective units "open", your alarm sounding device will turn on and can not be reset unless either the remote station is used to disarm the system or, in the event of a panic alarm, a switch located inside the locked master control is depressed.

The fire alarm circuitry in the master control, on the other hand, operates in a different fashion. The detectors in the fire alarm circuit are "open" normally and "closed" during an alarm condition.

However, supervision is still maintained at all times since double wiring is used, and a signal will be initiated should a wire break in this particular circuit (Model 342R only). The fire alarm portion of the system operates on a 24-hour basis. There is no way to turn this circuit off. Therefore, you are fully protected around the clock should a fire occur.

In order to easily distinguish between a burglary condition and a fire condition, the master control panel provides for two entirely separate signaling circuits. One set of terminals is connected to a bell to alert you that there is either a burglary or panic condition existing. A separate horn is wired to the fire signaling terminals and will only sound during a fire alarm condition. Since the bell sounds only for burglary or panic and the horn for only fire, you can immediately determine the nature of the alarm.

Instead of using a separate bell for burglary or panic and a horn for fire, your system may include a special module which provides for two distinctly different sounds using only one bell or one siren for signaling purposes. When installed, the module allows the bell or siren to sound in a steady manner for burglary or panic and pulses the bell on and off for a fire alarm condition; therefore, if the bell rings steadily you know that either a burglary or panic situation exists. If the bell or siren pulses on and off, you know that the fire alarm signaling circuit has been activated. Check with your installer to make certain that you understand which type of signaling system you have.

HOW TO OPERATE YOUR ADEMCO SECURITY SYSTEM

ARMING THE SYSTEM: The burglar alarm circuit of your Ademco Security System may be operated from **indoor or outdoor remote control stations**. Indoor remote stations have GREEN and RED, or just RED system status lamp(s) mounted on them, and either a push button, a momentary key-operated switch lock, or a digital keypad requiring a correct number combination. Outdoor remote stations have only a red status lamp and a momentary key-operated switch lock.

GREEN (OR FLASHING RED) STATUS LAMP (System OFF): When all windows and doors being monitored by intrusion detectors are closed and all inside trap protection devices such as under-the-carpet mats, photoelectric beams, and motion detectors are operating properly, the status lamp on all indoor remote control stations will be lit. The lit GREEN lamp (flashing RED for one-lamp stations) indicates that the security system is OFF but ready for arming.

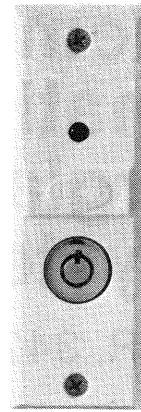
RED STATUS LAMP (System ON): After the GREEN (flashing RED for one-lamp stations) lamp is lit, the system may be turned ON by momentarily depressing the pushbutton, turning the key lock in any remote control station, or by entry of your number code on a keypad. This automatically lights the RED lamps steadily on all remote stations. If any intrusion detector or interior trap device is now tripped, an immediate alarm will sound (except for entry doors, if a delay zone is used).

DISARMING THE SYSTEM: The system may be turned OFF at a remote station by depressing a pushbutton, turning a key switch or by pushing the proper number code (on a remote digital keypad) on any remote station. Turning the RED light off disarms the system.

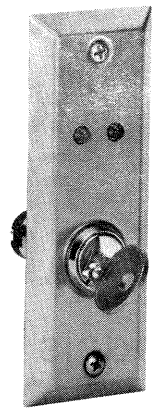
* U.L. Listed Household Fire-Burglary Control

SILENCING THE ALARM:

1. If a **burglar alarm** occurs, bells, horns, or sirens may be silenced by switching any remote control station OFF. Depress the pushbutton or turn the key switch or enter the keyed disarm code at any remote station so that the GREEN lamp is ON (or the RED lamp is flashing on one-lamp stations). If the alarm continues to sound, a fire or panic alarm has occurred. Go to the control box, open it, and push down the RESET switch on the left-hand side of the chassis.
2. If a **panic or fire alarm** occurs, determine and respond to the cause of the alarm and then go directly to the control box, open it, and depress the RESET switch on the left hand side of the chassis. (With Models 330R and 332R a remote reset switch may also have been installed.)



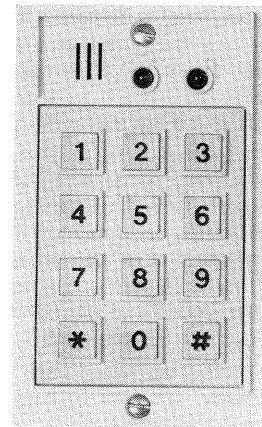
INDOOR/OUTDOOR
REMOTE CONTROL STATION
(Ademco No. 246R)



REMOTE KEYSWITCH
(Ademco No. 9787)

INSTRUCTIONS FOR LEAVING:

1. Go to an indoor remote control station and **make sure the GREEN lamp is ON** (or the RED lamp is flashing on one-lamp stations). If it is ON (or flashing), you may leave the premises and arm your system. If it is OFF, the protective circuit is not ready for arming. Make sure all doors and windows are closed properly. Check to see if furniture is blocking a photoelectric detector or sitting on top of an under-the-carpet mat. Check to see if something is moving in front of a motion detector.
2. **(SYSTEMS WITHOUT TIME DELAYS ONLY).** Leave the premises and shut the exit door. Turn the key on the outdoor remote station so that the Red "ARMED" lamp is ON.
- 2A. **(SYSTEMS WITH TIME DELAYS).** Arm an indoor remote control station so that the Red lamp is ON. You now must leave the premises and shut the exit door before the exit time delay expires. (Check with your local Ademco dealer to find out the exact length of the exit delay period.)



INDOOR REMOTE
DIGITAL KEYPAD
(Ademco Nos. 5240 or 215)

INSTRUCTIONS FOR ENTERING:

SYSTEMS WITHOUT TIME DELAYS: Go to an outdoor remote control station. Using the Ademco key, turn the lock so that the Red "ARMED" lamp goes off (or reverts to a flashing state). You now may enter the premises.

SYSTEMS WITH TIME DELAYS: Enter the premises, go immediately to an indoor remote station and switch it to the OFF position (GREEN lamp on or RED lamp flashing). This must be done before an entry delay time has elapsed, otherwise the alarm will sound. (Check with your local Ademco dealer to determine the exact length of the entry delay period.)



ENTRY DELAY
WARNING DEVICE
(Ademco No. 706
Mini-Howler)

SPECIAL FEATURES:

OPTIONAL ENTRY DELAY WARNING DEVICE (MINI-HOWLER): Indicates when the entry delay period has begun and that limited time is available to disarm the system at an indoor remote station before an alarm sounds. Helps prevent false alarms.

AUTOMATIC ALARM SHUTOFF: (Built into Model 332R and 342R controls; available as an option on other controls): Shuts off the burglar alarm system 15 to 30 minutes after an alarm occurs. (The shutoff may be disconnected, if desired, on Model 332R installations.) If your system has the shutoff feature, be sure to check an inside remote station after entering the premises and disarming the system. If an alarm has taken place, the remote station's GREEN light may not be lit (RED light may be off on single-lamp stations). Make sure the entry door is closed. Locate the detector that has been triggered and put it into operating condition. The GREEN lamp should now go ON (RED lamp should flash on one-lamp stations).

ZONE
SWITCH



1 and 2 ON

1 OFF

2 OFF

ZONE SWITCH: All master controls have a special located inside the locked cabinet on the left-hand side. This switch makes it possible to divide the burglar alarm circuit into 2 zones. Certain detectors protecting doors and windows may be on Zone 1 which operates whenever the system is turned ON. Other detectors, such as photoelectrics, mats, and motion detectors, may be on Zone 2 which is meant to be activated only when the premises are completely vacant (in homes, for example, with no children or animals present). Check with your local Ademco dealer for further details.

TESTING PROCEDURES

BURGLAR ALARM (MODELS WITHOUT DELAYS): Arm the system at a remote control station so that the RED lamp lights. Open, then close a protected door or window. The alarm should sound. Turn the alarm OFF by disarming the system at a remote station.

BURGLAR ALARM (MODELS WITH DELAYS): Arm the system at a remote station. Open and then close an exit door. Wait approximately 2 minutes to make certain that the alarm does not sound. Open the door again (when an entry delay warning device [mini-howler] is used, it will sound as soon as the door is opened this second time) and wait until the preset entry delay time period has passed. The alarm should now sound. Turn the alarm OFF by disarming the system at a remote station.

PANIC ALARM: Depress a panic (emergency) button. The alarm should sound. Reset the alarm by depressing the "Reset" switch in the master control cabinet.

FIRE ALARM AND STANDBY BATTERY (MODEL 342R): Unlock the control cabinet and push down the slide switch marked FIRE TEST (located in the upper right-hand corner of the panel). Hold the switch down. The alarm should sound and the AC lamp on the front panel should go OUT. Release the switch. The alarm should continue, but the AC lamp should light. Reset the alarm by depressing the RESET switch momentarily. If the alarm does not sound or if the AC lamp remains off even though house voltage is available, contact your local Ademco dealer immediately. This fire test should be conducted once a week to make sure that the system is operating properly.

FIRE ALARM (MODELS 330R AND 332R)*: Activate the fire alarm by blowing smoke into a smoke detector, or by lighting a match under a thermostat (avoid letting the flame come into direct contact with the thermostat). The fire alarm should sound. **Note: Some thermostats cannot be tested in this manner. Check with your local Ademco dealer before attempting a fire test.**

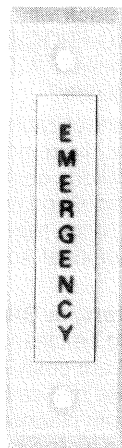
Reset the alarm by depressing the RESET switch in the master control cabinet. It may be necessary to hold the switch for a minute or until the thermostat cools down. If a smoke detector is tested, allow some time to pass until the smoke detector clears.

STANDBY BATTERY (MODELS 330R AND 332R)*: Pull out the system's plug-in transformer. The AC lamp on the control's front panel should go OUT, but the system should continue to function with the GREEN lamps on all remote stations ON (RED lamp flashing on one-lamp stations). Replace the plug-in transformer in its socket. The AC lamp should go back ON.

Note: After each alarm condition, the system should be tested in order to make certain that all circuits are operating.

SERVICING INFORMATION: Your local Ademco dealer is the man best qualified to service your alarm system. Arranging some kind of regular service program with him is advisable. Your local Ademco dealer is:

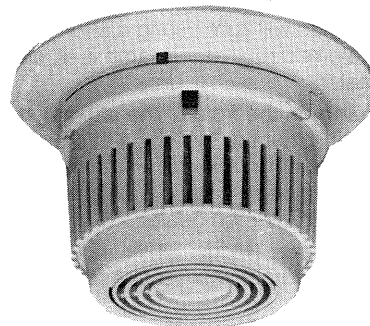
A few service functions, however, may be handled directly by you:



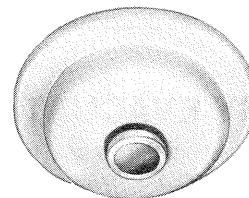
PANIC (EMERGENCY) BUTTON
(Ademco No. 219)



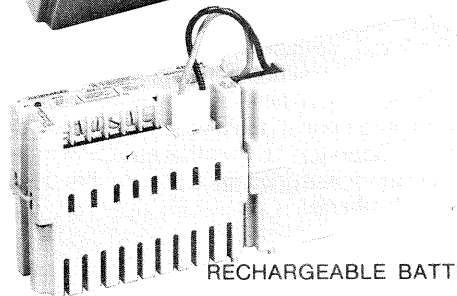
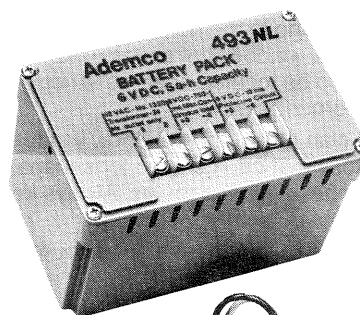
FIRE TEST SWITCH
(On Model 342R)



SMOKE DETECTOR
(BK-2806TH)



THERMOSTAT
(Ademco No. 502 or 504)



RECHARGEABLE BATTERY PACK
Ademco No. 492NL for Models 330R25, 332R25
Ademco No. 493NL for Models 330R50, 332R50
Ademco No. 487 for Model 342R25
Ademco No. 488 for Model 342R50

1. All models use a rechargeable battery pack which need not necessarily be replaced. The TESTING PROCEDURES described above tell how to check its condition. If a test fails, contact your local Ademco dealer immediately.

2. The circuit breaker inside the master control cabinet may have to be reset if a short circuit occurs in the remote station wiring. If a short occurs and all remote stations do not operate properly, open the master control cabinet and momentarily push in the "Red Light Reset" breaker. If the remote stations still do not function properly, call your local Ademco dealer.

3. BRK Model BK-2806TH Smoke Detectors, or BRK Model BK-1806 Combustion Detectors, should be cleaned at least yearly, or more often if in areas that are dusty or exposed to small insects. Clean the Smoke or Combustion Detector by passing the nozzle of a vacuum cleaner along the outside cover or by using compressed air (no more than 50-60 psi).

4. The short circuit lamp located inside the control cabinet on the left-hand side will light during a short circuit condition on the burglar alarm circuit. If this lamp is lit, contact your local Ademco dealer.

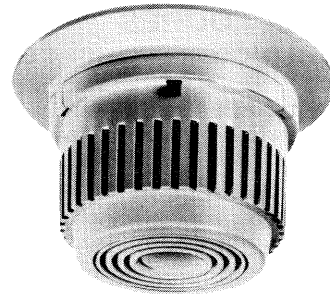
5. The pilot lamp on the front of the cabinet should be lit at all times, indicating that the system is operating from AC power. If this lamp goes out, it may be an indication that the AC supply is interrupted or a trouble condition is present. If this occurs, call your Ademco dealer.

6. The trouble buzzer (Model 342R) indicates a broken wire in the fire circuit. Contact your local Ademco dealer immediately.

CAUTION: After a sustained AC power outage, the system's battery may require a recovery period of up to 24 hours (or replacement) before it is again capable of sounding and communicating alarms. Conduct battery test as described earlier.



RED LIGHT
RESET



COMBUSTION DETECTOR
(BK-1806)

SHORT
CIRCUIT
LAMP

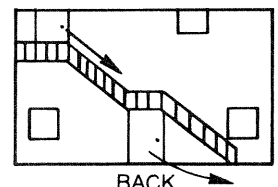
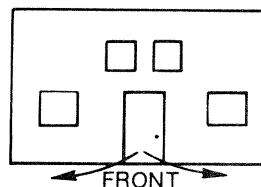
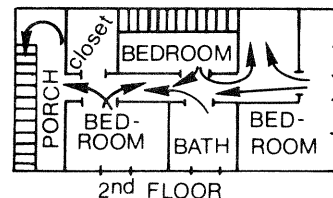
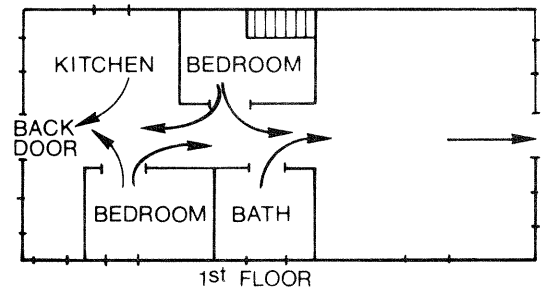


EMERGENCY EVACUATION PLAN

An emergency evacuation plan should be established for an actual fire alarm condition. For example, the following steps are recommended by the National Fire Protection Association and can be used as a guide in establishing this plan for homes. Similar plans may be made for commercial establishments.

1. Determine two means of escape from each bedroom. One will be the door leading to the normal exit from the house. The other may be a window that opens easily. An escape ladder may have to be located near the window if there is a long drop to the ground below.
2. Draw up a floor plan of your home. Show windows, doors, stairs, and rooftops that can be used for escape. Indicate each family member's escape routes. Always keep these routes free from obstruction.
3. Set a meeting place outdoors for a head count of family members.
4. Practice escape procedures. Sleep with the bedroom door closed. It will increase your escape time. If you suspect fire, test the door. If it is hot, don't open the hall is already too hot to enter. If you think it's safe, brace your shoulder against the door and open it cautiously. Be ready to slam the door if smoke or heat rush in. Practice escaping to the outdoors and meeting at an assigned spot. Call the fire department from a neighbor's phone.

EXAMPLES



SOME TIPS ON RESIDENTIAL FIRE PROTECTION

Since most fires in a home occur at night when everyone is asleep, the ideal location for a smoke detector is between the bedroom area and the rest of the house. If the bedrooms are spread out or if they are located in different sections of the house, one smoke detector should be placed near each of these sleeping areas.

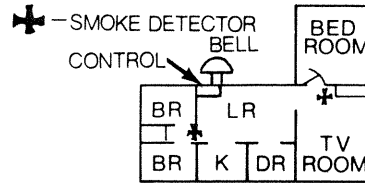
In multi-level houses, one smoke detector may be sufficient to protect an entire floor. Since smoke rises, a stairwell in a home tends to become a natural "chimney" for smoke rising from one level to the next. Therefore, by locating a smoke detector near the top of the stairs leading to a main sleeping area, all bedrooms can be successfully protected using a minimum of units.

Locating a smoke detector outside a particular bedroom will not protect the occupants of that room should a fire originate there. It may be advisable, therefore, to locate a smoke detector in each bedroom.

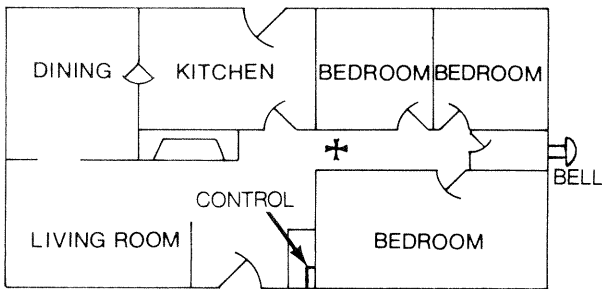
In general, early warning fire detection is best achieved by the installation of fire detection equipment in all rooms and areas of the household as follows:

A smoke detector installed in each separate sleeping area (the vicinity of, but outside of the bedrooms), and heat or smoke detectors in living rooms, dining rooms, closets, utility and storage rooms, basements and attached garages.

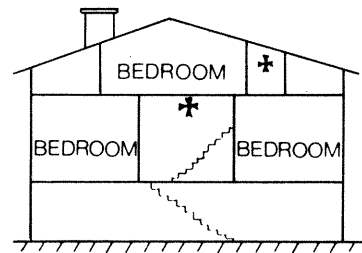
Note: After the installation of your alarm system has been completed, notify your local fire department to give them your name and address for their records.



PLACE DETECTOR NEAR ALL SLEEPING AREAS



BEST RESIDENTIAL DETECTOR PLACEMENT: BETWEEN BEDROOMS and REST OF HOUSE



MAXIMUM FLOOR COVERAGE—DETECTORS AT TOP OF STAIRWELLS

+ = SMOKE DETECTOR

ATTENTION, RESIDENTIAL SYSTEM OWNERS!

HOMEOWNER'S INSURANCE PREMIUM CREDIT REQUEST

This form should be completed and forwarded to your homeowner's insurance carrier for possible premium credit. (The Ademco No. 342R control is Underwriters Laboratories Listed for Household Combination Fire and Burglary use.)

A. GENERAL INFORMATION:

Insured's Name and Address: _____

Insurance Company: _____ Policy No.: _____

Ademco Control Model No.: _____

Type of Alarm: Burglary Fire Both

Installed by: _____ Name _____ Served by: _____ Name _____

_____ Address _____ Address _____

B. NOTIFIES (Insert B = Burglary, F = Fire)

Local Sounding Device: _____ Police Dept: _____ Fire Dept: _____

Central Station: _____ Name and Address _____

(OVER)

LIMITED WARRANTY

Seller warrants its products to be in conformance with its own plans and specifications and to be free from defects in materials and workmanship under normal use and service for 18 months from the date stamp control on the product or for products not having an Ademco date stamp, for 12 months from date of original purchase unless the installation instructions or catalog sets forth a shorter period, in which case the shorter period shall apply. Seller's obligation shall be limited to repairing or replacing, at its option, free of charge for materials or labor, any part which is proved not in compliance with Seller's specifications or proves defective in materials or workmanship under normal use and service. Seller shall have no obligation under this Limited Warranty if the product is altered or improperly repaired or serviced by anyone other than Ademco factory service. For warranty service, return product transportation prepaid, to Ademco Factory Service, 165 Eileen Way, Syosset, New York 11791.

THERE ARE NO WARRANTIES, EXPRESS OR IMPLIED, OF MERCHANTABILITY, OR FITNESS FOR A PARTICULAR PURPOSE OR OTHERWISE, WHICH EXTEND BEYOND THE DESCRIPTION ON THE FACE HEREOF. IN NO CASE SHALL SELLER BE LIABLE TO ANYONE FOR ANY CONSEQUENTIAL OR INCIDENTAL DAMAGES FOR BREACH OF THIS OR ANY OTHER WARRANTY, EXPRESS OR IMPLIED OR UPON ANY OTHER BASIS OF LIABILITY WHATSOEVER, EVEN IF THE LOSS OR DAMAGE IS CAUSED BY THE SELLER'S OWN NEGLIGENCE OR FAULT.

Seller does not represent that its product may not be compromised or circumvented; that the product will prevent any personal injury or property loss by burglary, robbery, fire or otherwise; or that the product will in all cases provide adequate warning or protection. Buyer understands that a properly installed and maintained alarm may only reduce the risk of a burglary, robbery or fire without warning, but it is not insurance or a guarantee that such will not occur or that there will be no personal injury or property loss as a result. CONSEQUENTLY, SELLER SHALL HAVE NO LIABILITY FOR ANY PERSONAL INJURY, PROPERTY DAMAGE OR OTHER LOSS BASED ON A CLAIM THE PRODUCT FAILED TO GIVE WARNING. However, if Seller is held liable, whether directly or indirectly, for any loss or damage arising under this Limited Warranty or otherwise, regardless of cause or origin, Seller's maximum liability shall not in any case exceed the purchase price of the product, which shall be fixed as liquidated damages and not as a penalty, and shall be the complete and exclusive remedy against Seller.

This warranty replaces all previous warranties and is the only warranty made by Ademco on this product. No increase or alteration, written or verbal, of the obligation of this Limited Warranty is authorized.

"Ademco" is a registered trademark of Alarm Device Manufacturing Company, Division of Pittway Corp.

C. POWERED BY: Rechargeable Power Supply A.C. with Standby Dry Battery

D. TESTING: Quarterly Monthly Other _____

E. SMOKE AND HEAT DETECTOR LOCATIONS (Insert S = Smoke, H = Heat)

Furnace Area _____, Kitchen _____, Bedrooms _____, Attic _____, Basement _____, Living Room _____,
Dining Room _____, Hall _____

F. BURGLARY DETECTING DEVICE LOCATIONS:

- Front Door Basement Door Rear Door All Exterior Door 1st Floor Windows
- All Windows All Accessible Openings, Including Skylights, Air Conditioners and Vents
- Interior Locations

G. ADDITIONAL PERTINENT INFORMATION:

Signature: _____ Date: _____

ADEMCO ALARM DEVICE MANUFACTURING COMPANY
165 Eileen Way, Syosset, New York 11791

WARNING

THE LIMITATIONS OF THIS ALARM SYSTEM

While this system is a highly reliable security system, it does not offer guaranteed protection against burglary, fire or other emergency. Any alarm system, whether commercial or residential, is subject to compromise or failure to warn for a number of reasons. For example:

- Intruders may gain access through unprotected openings or have the technical sophistication to bypass an alarm sensor or disconnect an alarm warning device.
- Intrusion detectors (e.g., passive infrared detectors), smoke detectors, and many other sensing devices will not work without power. Battery operated devices will not work without batteries, with dead batteries, or if the batteries are not put in properly. Devices powered solely by AC will not work if their AC power supply is cut off for any reason, however briefly.
- A user may not be able to reach a panic or emergency button quickly enough.
- While smoke detectors have played a key role in reducing residential fire deaths in the United States, they may not activate or provide early warning for a variety of reasons in as many as 35% of all fires, according to data published by the Federal Emergency Management Agency. Some of the reasons smoke detectors used in conjunction with this system may not work are as follows. Smoke detectors may have been improperly installed and positioned. Smoke detectors may not sense fires that start where smoke cannot reach the detectors, such as in chimneys, in walls, or roofs, or on the other side of closed doors. Smoke detectors also may not sense a fire on another level of a residence or building. A second floor detector, for example, may not sense a first floor or basement fire. Moreover, smoke detectors have sensing limitations. No smoke detector can sense every kind of fire every time. In general, detectors may not always warn about fires caused by carelessness and safety hazards like smoking in bed, violent explosions, escaping gas, improper storage of flammable materials, overloaded electrical circuits, children playing with matches, or arson. Depending on the nature of the fire and/or the location of the smoke detectors, the detector, even if it operates as anticipated, may not provide sufficient warning to allow all occupants to escape in time to prevent injury or death.
- Alarm warning devices such as sirens, bells, or horns may not alert people or wake up sleepers who are located on the other side of closed or partly open doors. If warning devices sound on a different level of the residence from the bedrooms, then they are less likely to waken or alert people inside the bedrooms. Even persons who are awake may not hear the warning if the alarm is muffled by noise from a stereo, radio, air conditioner or other appliance, or by passing traffic. Finally, alarm warning devices, however loud, may not warn hearing-impaired people or waken deep sleepers.
- Telephone lines needed to transmit alarm signals from a premises to a central monitoring station may be out of service or temporarily out of service. Telephone lines are also subject to compromise by sophisticated intruders.
- Even if the system responds to the emergency as intended, however, occupants may have insufficient time to protect themselves from the emergency situation. In the case of a monitored alarm system, authorities may not respond appropriately.
- This equipment, like other electrical devices, is subject to component failure. Even though this equipment is designed to last as long as 10 years, the electronic components could fail at any time.

The most common cause of an alarm system not functioning when an intrusion or fire occurs is inadequate maintenance. This alarm system should be tested weekly to make sure all sensors are working properly.

Installing an alarm system may make one eligible for lower insurance rates, but an alarm system is not a substitute for insurance. Homeowners, property owners and renters should continue to act prudently in protecting themselves and continue to insure their lives and property.

We continue to develop new and improved protection devices. Users of alarm systems owe it to themselves and their loved ones to learn about these developments.

ADEMCO

ALARM DEVICE MANUFACTURING CO.
A DIVISION OF PITTMAY CORPORATION
165 Eileen Way, Syosset, New York 11791